



Kaysun
by frigicoll

ES

FR

ENGLISH

LANGUAGES

Cassette 840x840

4 Pipes



KI-04 S
Recommended controller

Product certified by:

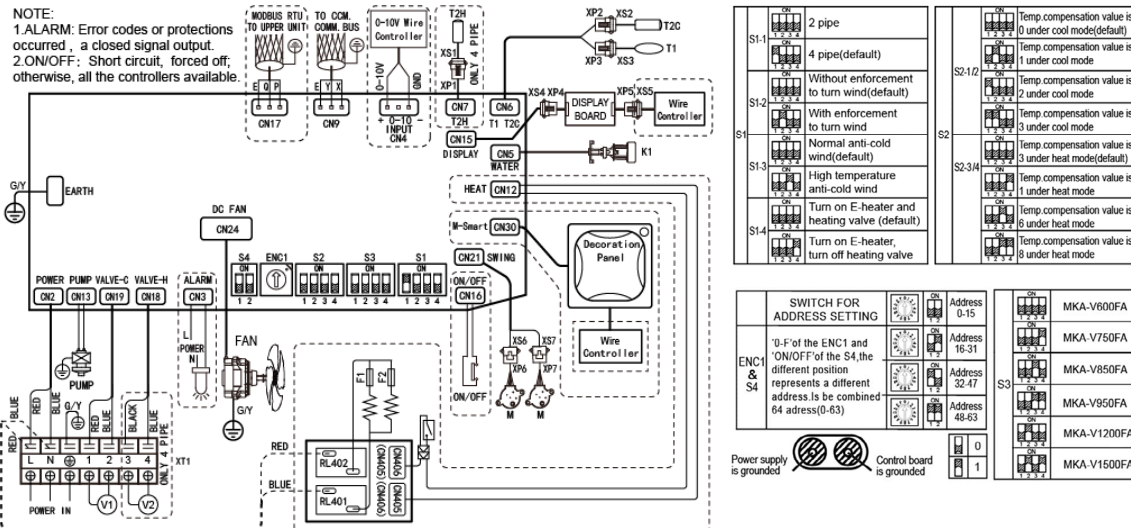


FEATURES

Model	KFC-CIS-4T-600D2	KFC-CIS-4T-950D2	KFC-CIS-4T-1500D2
Cooling capacity	4 / 5,36 kW	4,75 / 5,82 kW	6,45 / 8,76 kW
Heating capacity	5,09 / 7,38 kW	5,93 / 8,52 kW	8,24 / 12,29 kW
Power input	19 / 50 W	32 / 77 W	38 / 125 W
Airflow	1.191/1.410/1.857 m3/h	1.088/1.212/1.525 m3/h	1.191/1.410/1.857 m3/h
Sound pressure	31/37/42 dB(A)	38/41/46 dB(A)	38/43/49 dB(A)
Water flow cooling	0,72 / 0,99 m3/h	0,83 / 1,04 m3/h	1,15 / 1,58 m3/h
Evaporator pressure drop cool.	8,10 / 14,80 kPa	10,90 / 16,40 kPa	17,70 / 33 kPa
Evaporator pressure drop heat.	14,50 / 25,30 kPa	23,50 / 34 kPa	27 / 48,70 kPa
Hydraulic connections	Ø3/4"	Ø3/4"	Ø3/4"
Power supply	220-240 V / 1 / 50 Hz		
Power wiring	(2+T)x2,50 mm ²		

WIRING DIAGRAM

NOTE:
1.ALARM: Error codes or protections occurred, a closed signal output.
2.ON/OFF: Short circuit, forced off; otherwise, all the controllers available.



Terminal	Description
S1-1	2 pipe
S1-2	4 pipe (default)
S1-3	Without enforcement to turn wind (default)
S1-4	With enforcement to turn wind
S2-1/2/3/4	Temp compensation value is 0 under cool mode (default), 1 under cool mode, 2 under cool mode, 3 under cool mode
S2-5/6/7/8	Temp compensation value is 1 under heat mode, 2 under heat mode (default), 3 under heat mode, 4 under heat mode
S2-9/10/11/12	Temp compensation value is 1 under heat mode, 2 under heat mode, 3 under heat mode, 4 under heat mode

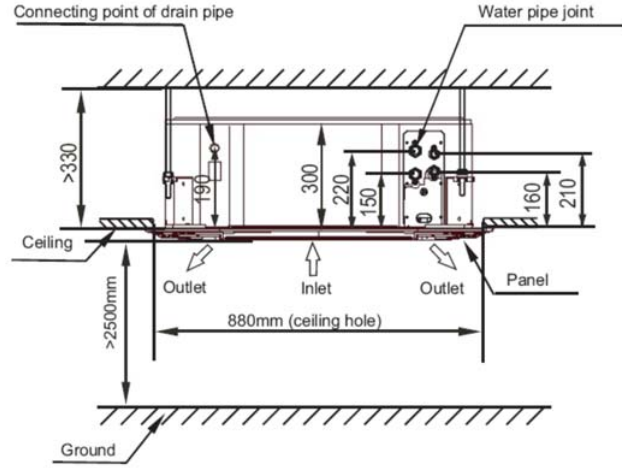
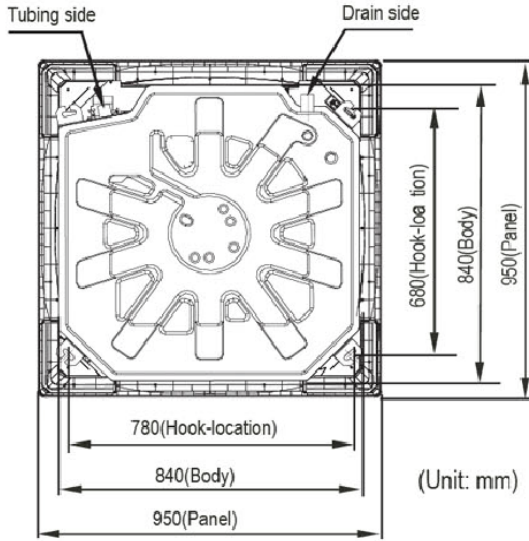
CODE	DESCRIPTION
CN1-30	P.C BOARD SOCKETS
K1	WATER LEVEL SWITCH
DC FAN	INDOOR DC FAN MOTOR
M	SWING MOTOR
PUMP	PUMP MOTOR
T1	ROOM TEMPERATURE
T2C/T2H	PIPE TEMPERATURE
XP1-7	CONNECTORS
XS1-7	CONNECTORS
XT1	7-WAY TERMINAL

SWITCH FOR ADDRESS SETTING	Address	Model
0-15	0-15	MKA-V600FA
16-31	16-31	MKA-V750FA
32-47	32-47	MKA-V850FA
48-63	48-63	MKA-V950FA
		MKA-V1200FA
		MKA-V1500FA

NOTES:
(1) The data and specifications present in this sheet may vary without notice.
(2) The images on this sheet are indicative and may be different from the final machine.



DIMENSIONS & WEIGHT



Model	Net weight (kg)	Panel weight (kg)
KFC-CIS-4T-600D2	23	5
KFC-CIS-4T-950D2	27	5
KFC-CIS-4T-1500D2	29,50	5

INSTALLATION

