

Cassette 600x600

4 Pipes



KI-04 S
Recommended controller

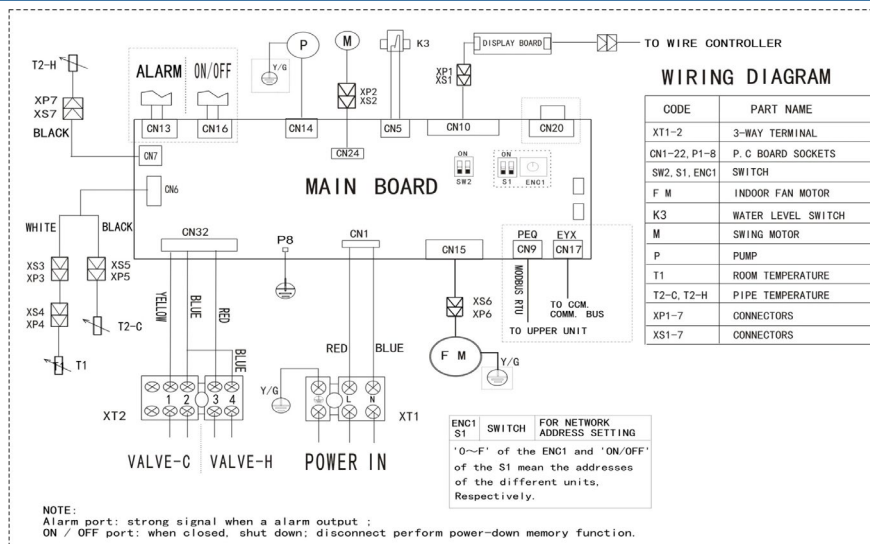
Product certified by:



FEATURES

Model	KFC-CI-4T-300D1	KFC-CI-4T-500D1
Cooling capacity	1,65 / 2,40 kW	2,30 / 3,05 kW
Heating capacity	2,25 / 4,24 kW	3,09 / 5,97 kW
Power input	5 / 14 W	11 / 32 W
Airflow	321/429/539 m ³ /h	462/572/731 m ³ /h
Sound pressure	27/33/39 dB(A)	31/39/44 dB(A)
Water flow cooling	0,29 / 0,42 m ³ /h	0,40 / 0,54 m ³ /h
Water flow heating	0,21 / 0,32 m ³ /h	0,28 / 0,39 m ³ /h
Evaporator pressure drop cool.	9,30 / 17,40 kPa	10,30 / 16,80 kPa
Evaporator pressure drop heat.	11,30 / 23,50 kPa	14,50 / 26,80 kPa
Hydraulic connections cool.	Ø3/4"	Ø3/4"
Hydraulic connections heat.	Ø1/2"	Ø1/2"
Power supply	220-240 V / 1 / 50 Hz	
Power wiring	(2+T)x2,50 mm ²	

WIRING DIAGRAM

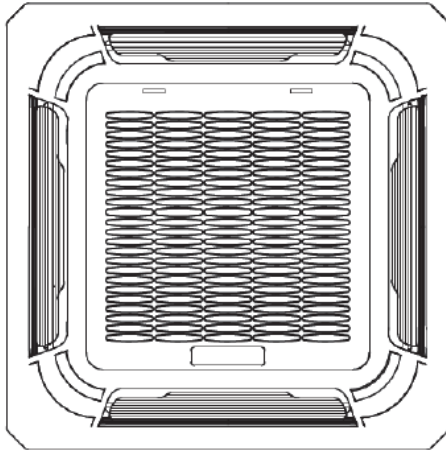
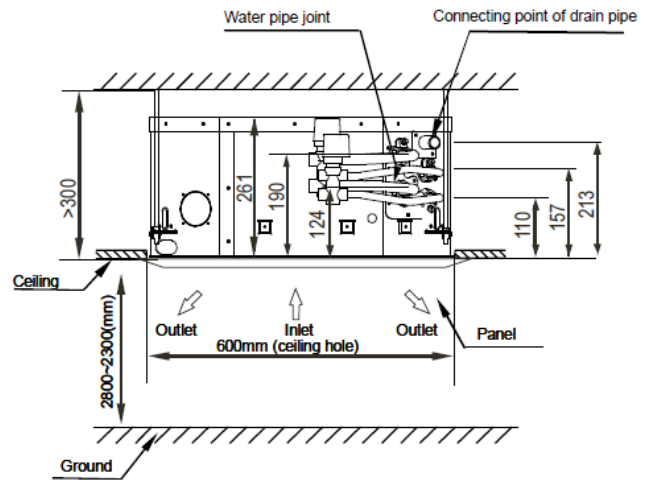
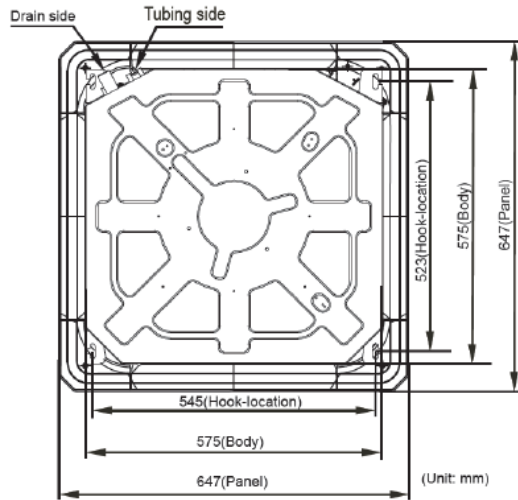


NOTES:

(1) The data and specifications present in this sheet may vary without notice.

(2) The images on this sheet are indicative and may be different from the final machine.

DIMENSIONS & WEIGHT



Model	Weight	Weight Panel
KFC-CI-4T-300D1	16,70 kg	2,50 kg
KFC-CI-4T-500D1	16,70 kg	2,50 kg

